

Central Statistics Office: Ireland Statistical Abstract 1982-1985; Dublin: The Stationery Office, 1986, p. 57.

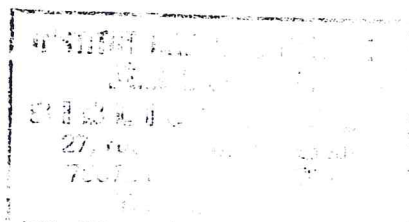


**IRELAND**

**STATISTICAL ABSTRACT**

**1982 - 1985**

COMPILED BY  
CENTRAL STATISTICS OFFICE



---

DUBLIN  
PUBLISHED BY THE STATIONERY OFFICE  
To be purchased from the  
GOVERNMENT PUBLICATIONS SALE OFFICE,  
SUN ALLIANCE HOUSE, MOLESWORTH ST., DUBLIN, 2  
or through any Bookseller.

£12.50

Pl. 3217

SEPTEMBER 1986

ISSN 0081-4660

SI EI 1982/1985



Table 2.39 Expectation of Life (Urban Districts)

The number, according to the Irish Life Table No. 10A, 1980-82, surviving to exact age  $x$ , and the complete expectation of life at each year of age.

1985-87, surviving to year of age.

Age	Expectation of life		Age $x$	The number according to the life table surviving to exact age $x$		Expectation of life		Age $x$	The number according to the life table surviving to exact age $x$		Expectation of life	
	Male	Female		Male	Female	Male	Female		Male	Female	Male	Female
370	19.79	24.25	0	100,000	100,000	69.08	75.14	55	86,548	91,871	18.94	23.48
322	18.99	23.39	1	98,651	98,894	69.02	74.98	56	85,353	91,157	18.20	22.66
317	18.21	22.54	2	98,538	98,812	68.10	74.04	57	84,046	90,386	17.47	21.85
345	17.45	21.70	3	98,463	98,755	67.15	73.08	58	82,623	89,548	16.77	21.05
296	16.71	20.87	4	98,407	98,710	66.19	72.11	59	81,077	88,630	16.08	20.26
461	15.98	20.06	5	98,345	98,665	65.23	71.15	60	79,403	87,623	15.40	19.49
535	15.28	19.26	6	98,300	98,642	64.26	70.16	61	77,600	86,522	14.75	18.73
514	14.59	18.48	7	98,262	98,620	63.28	69.18	62	75,667	85,325	14.11	17.99
100	13.93	17.71	8	98,224	98,601	62.31	68.19	63	73,604	84,036	13.50	17.25
199	13.28	16.95	9	98,189	98,585	61.33	67.20	64	71,418	82,666	12.89	16.53
216	12.64	16.20	10	98,155	98,570	60.35	66.21	65	69,115	81,223	12.31	15.82
148	12.02	15.45	11	98,122	98,555	59.37	65.22	66	66,697	79,706	11.73	15.11
182	11.42	14.72	12	98,087	98,539	58.39	64.23	67	64,164	78,099	11.18	14.41
195	10.83	14.00	13	98,049	98,522	57.41	63.24	68	61,513	76,375	10.64	13.72
166	10.26	13.30	14	98,003	98,502	56.44	62.26	69	58,743	74,505	10.12	13.05
180	9.71	12.61	15	97,948	98,477	55.47	61.27	70	55,859	72,472	9.61	12.41
128	9.18	11.95	16	97,881	98,448	54.51	60.29	71	52,869	70,266	9.13	11.78
101	8.67	11.30	17	97,803	98,414	53.55	59.31	72	49,786	67,883	8.66	11.18
94	8.18	10.67	18	97,716	98,377	52.60	58.33	73	46,622	65,329	8.22	10.59
15	7.71	10.05	19	97,623	98,339	51.65	57.36	74	43,391	62,617	7.79	10.03
68	7.26	9.46	20	97,525	98,300	50.70	56.38	75	40,110	59,754	7.39	9.49
55	6.83	8.88	21	97,423	98,260	49.75	55.40	76	36,804	56,750	7.01	8.96
67	6.42	8.32	22	97,319	98,221	48.81	54.42	77	33,507	53,613	6.65	8.46
92	6.03	7.78	23	97,212	98,182	47.86	53.44	78	30,258	50,351	6.31	7.97
17	5.66	7.27	24	97,104	98,144	46.91	52.46	79	27,093	46,972	5.98	7.51
44	5.31	6.78	25	96,997	98,109	45.96	51.48	80	24,042	43,493	5.68	7.07
96	4.98	6.32	26	96,892	98,075	45.01	50.50	81	21,134	39,943	5.39	6.66
17	4.67	5.89	27	96,788	98,043	44.06	49.52	82	18,394	36,356	5.12	6.26
72	4.38	5.49	28	96,683	98,009	43.11	48.53	83	15,844	32,780	4.86	5.89
21	4.10	5.11	29	96,575	97,971	42.15	47.55	84	13,501	29,257	4.62	5.54
20	3.85	4.75	30	96,464	97,926	41.20	46.57	85	11,373	25,826	4.39	5.21
35	3.61	4.43	31	96,350	97,872	40.25	45.60	86	9,468	22,528	4.18	4.90
33	3.38	4.12	32	96,230	97,811	39.30	44.63	87	7,784	19,404	3.97	4.61
78	3.17	3.83	33	96,102	97,742	38.35	43.66	88	6,317	16,490	3.78	4.34
19	2.98	3.57	34	95,963	97,670	37.41	42.69	89	5,057	13,815	3.60	4.08
25	2.79	3.32	35	95,812	97,595	36.46	41.72	90	3,991	11,399	3.42	3.84
28	2.62	3.10	36	95,646	97,519	35.53	40.76	91	3,103	9,255	3.26	3.61
26	2.46	2.88	37	95,465	97,438	34.59	39.79	92	2,376	7,387	3.10	3.40
30	2.31	2.69	38	95,269	97,348	33.66	38.83	93	1,790	5,790	2.96	3.20
72	2.17	2.51	39	95,062	97,244	32.74	37.87	94	1,326	4,452	2.81	3.01
29	2.04	2.34	40	94,844	97,122	31.81	36.91	95	965	3,354	2.68	2.84
12	1.91	2.18	41	94,616	96,981	30.89	35.97	96	690	2,473	2.55	2.67
75	1.79	2.03	42	94,371	96,818	29.96	35.03	97	484	1,782	2.43	2.51
17	1.68	1.89	43	94,104	96,634	29.05	34.09	98	332	1,253	2.30	2.35
32	1.58	1.76	44	93,805	96,431	28.14	33.16	99	224	859	2.18	2.21
39	1.48	1.64	45	93,473	96,210	27.24	32.24	100	147	573	2.05	2.06
19	1.38	1.52	46	93,099	95,969	26.34	31.32	101	95	372	1.91	1.90
35	1.28	1.39	47	92,677	95,704	25.46	30.40	102	59	234	1.75	1.73
14	1.16	1.24	48	92,198	95,405	24.59	29.50	103	36	142	1.54	1.51
11	1.00	1.05	49	91,650	95,063	23.74	28.60	104	22	84	1.24	1.22
9	0.69	0.71	50	91,026	94,670	22.90	27.72	105	13	47	0.78	0.77
			51	90,318	94,221	22.07	26.85					
			52	89,520	93,713	21.26	25.99					
			53	88,628	93,150	20.47	25.14					
			54	87,639	92,535	19.70	24.31					